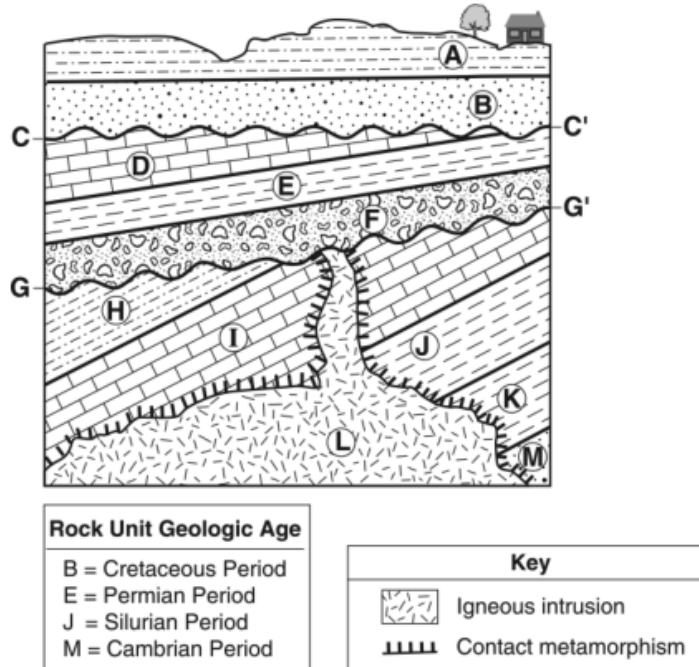


Name: \_\_\_\_\_

Relative Dating of Bedrock



1. List the geologic events in order from oldest to youngest (C-C' is one event as is G-G')  
 \_\_\_\_\_ → \_\_\_\_\_ → \_\_\_\_\_ → \_\_\_\_\_ → \_\_\_\_\_ → \_\_\_\_\_ → \_\_\_\_\_ → \_\_\_\_\_ → \_\_\_\_\_ → \_\_\_\_\_ → \_\_\_\_\_ → \_\_\_\_\_ → \_\_\_\_\_  
 Oldest Youngest

2. Identify the geological time period for Layer K: \_\_\_\_\_

3. C-C' and G-G' are called \_\_\_\_\_, caused by \_\_\_\_\_.

4. L is called a \_\_\_\_\_, producing \_\_\_\_\_ rock.

5. Identify the metamorphic rocks that will be caused where L comes into contact with:  
 a. Layer J: \_\_\_\_\_  
 b. Layer K: \_\_\_\_\_  
 c. Layer I: \_\_\_\_\_

6. Looking at ESRT 8 and the information provided in the diagram, C-C' probably coincided with what event in the history of life on Earth? Support your claim.

---



---



---

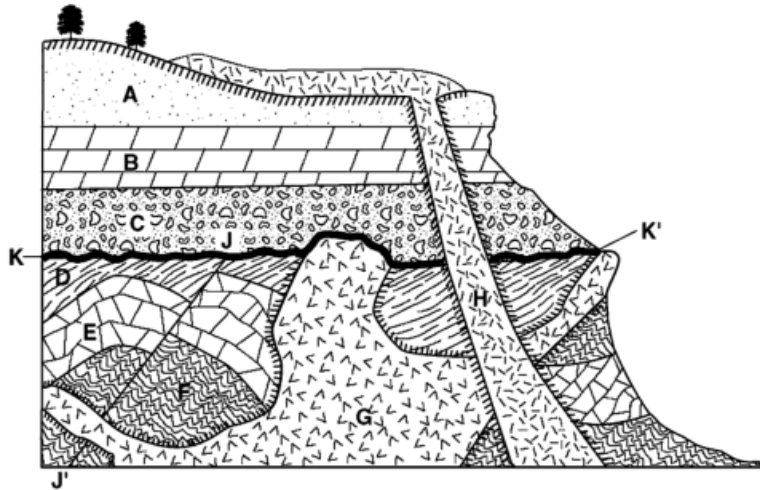


---



---

Name: \_\_\_\_\_



7. List the geologic events in order from oldest to youngest (**K-K'** is one event as is **J-J'**)

\_\_\_\_\_ → \_\_\_\_\_ → \_\_\_\_\_ → \_\_\_\_\_ → \_\_\_\_\_ → \_\_\_\_\_ → \_\_\_\_\_ → \_\_\_\_\_ → \_\_\_\_\_ → \_\_\_\_\_ → \_\_\_\_\_  
**Oldest** **Youngest**

8. Identify the specific type of rock at

- a. Layer **A**: \_\_\_\_\_
- b. Layer **B**: \_\_\_\_\_
- c. Layer **C**: \_\_\_\_\_

9. Identify the type of metamorphic rock that will be produced by **H** at

- a. Layer **A**: \_\_\_\_\_
- b. Layer **B**: \_\_\_\_\_
- c. Layer **C**: \_\_\_\_\_

10. What differences would you expect from the igneous rock produced at the surface from **H** versus the igneous rock produced by **G**? Explain why this is the case.

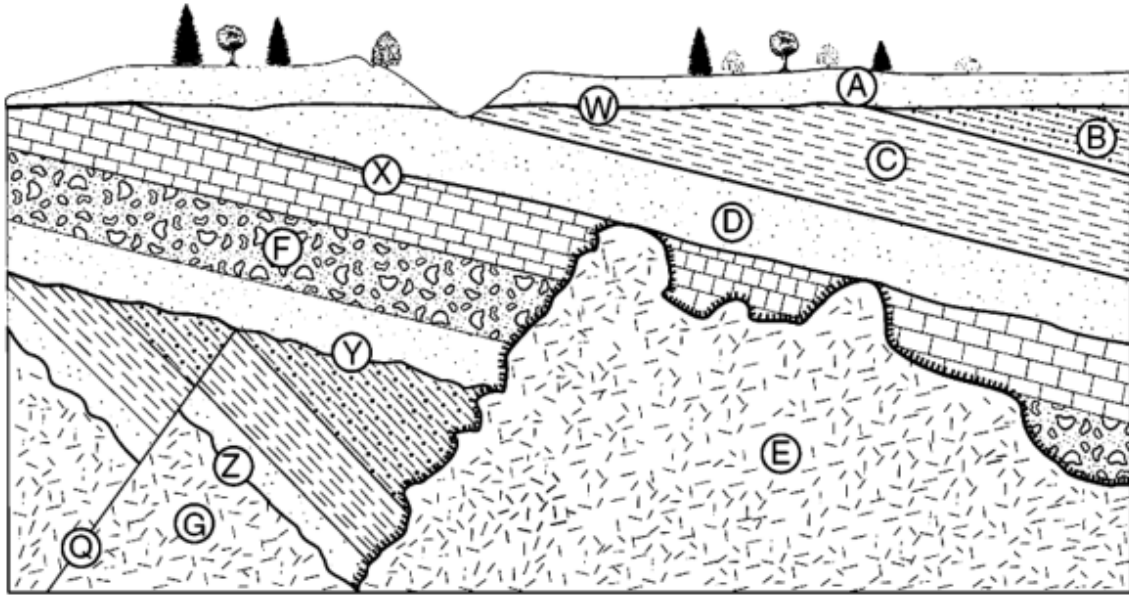
\_\_\_\_\_  
\_\_\_\_\_

11. Index fossil **R** was found in Layer **A**. Based on this, what Generalized Landscape Region of NY could you find this surface bedrock? \_\_\_\_\_

12. When layer **D** was forming, the dome-like uplift of the Adirondack region began. Based on this, what can you conclude caused **K-K'**? Explain your logic

\_\_\_\_\_  
\_\_\_\_\_  
\_\_\_\_\_  
\_\_\_\_\_

Name: \_\_\_\_\_



13. List the geologic events in order from youngest to oldest

\_\_\_\_ → \_\_\_\_ → \_\_\_\_ → \_\_\_\_ → \_\_\_\_ → \_\_\_\_ → \_\_\_\_ → \_\_\_\_ → \_\_\_\_ → \_\_\_\_ → \_\_\_\_ → \_\_\_\_  
Youngest Oldest

14. What force most likely caused the surface erosion and what is your explanation?

Force of erosion: \_\_\_\_\_

Explanation: \_\_\_\_\_

15. Why are the layers of bedrock on an angle instead of lying horizontally?

\_\_\_\_\_  
\_\_\_\_\_

16. Prior to event X, what was the local environment like (generally speaking)? Explain

\_\_\_\_\_  
\_\_\_\_\_

17. Looking at this diagram, would you say this is representative of a place on the boundary of a tectonic plate and what evidence supports your claim?

\_\_\_\_\_  
\_\_\_\_\_  
\_\_\_\_\_

18. What minimum stream velocity (ESRT 6) was required to transport the sediments in

a. Layer B: \_\_\_\_\_

b. Layer C: \_\_\_\_\_

Name: \_\_\_\_\_

19. You will be creating your own bedrock diagram using the following guidelines...

Check off each box at the end to make sure you have done this correctly. The numbers represent the minimum for each guideline and you can have more if you want.

- |   |   |
|---|---|
| <input type="checkbox"/> 7 layers of bedrock                          | <input type="checkbox"/> 1 unconformity |
| <input type="checkbox"/> Layers identified with Map Symbols on ESRT 7 | <input type="checkbox"/> 1 intrusion    |
| <input type="checkbox"/> 3 index fossils placed appropriately         | <input type="checkbox"/> 1 fault        |

20. Create 5 questions based on your bedrock diagram. You must write legibly

Question 1:

Question 2:

Question 3:

Question 4:

Question 5: